



## PROPOSALS

## CONCEPT PROPOSAL JERICHO BLOCK

### *...an introduction*

A soft, traditional approach to the restoration of the valley is a determining factor for what has been proposed for the Jericho Block. Apart from the initial celebratory removal of the stream diversion, heavy machinery is avoided as the means to create wetted, *not wetland or ponded* areas. Instead, ways of diverting the stream flow through traditional planting and temporary dams is used (refer to the **TRADITIONAL TECHNIQUES** sketches - see over).

A reintroduced kahikatea forest planted along the slowed and widened Jericho Stream will be a major feature. The valley will be left largely to self-regenerate into native shrubland and forest with discrete areas of concentrated human activity taking place throughout in small 'nuclei' plantings amongst the existing dense manuka and along the north facing hillslopes. A policy of management for natural succession will be followed over many years.

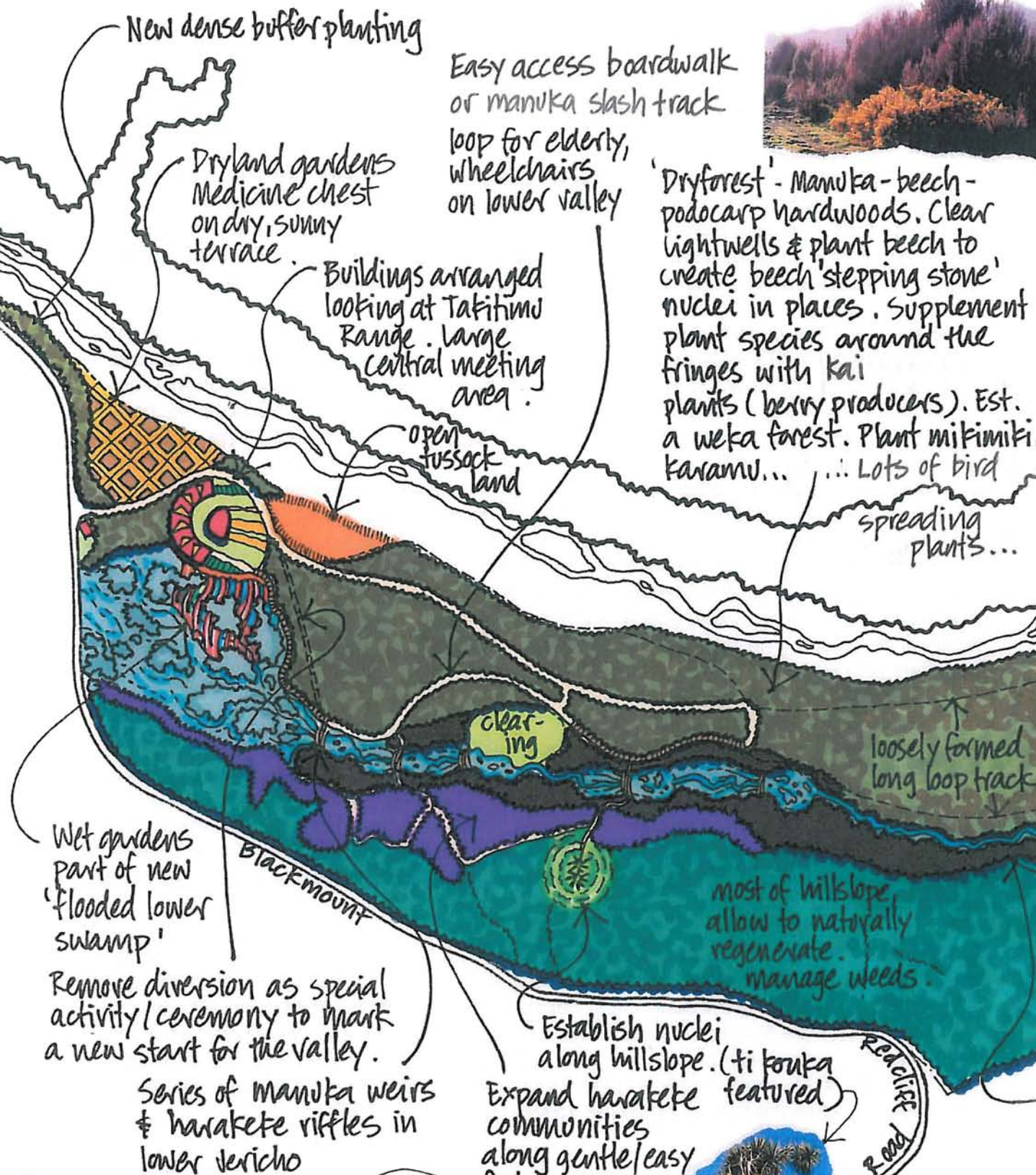
An area of concentrated human activity will greet the visitor to the valley, as they turn in off the Blackmount Redcliff Road, with both dry and wet traditional 'gardens' flanking the driveway in. The true spirit of celebrating mahika kai values will be evident. The complex of low single storey buildings forming the built 'hub' of the valley will be sourced from the nearby West Arm part of the Manapouri power scheme. This array will comprise an on-site nursery or plant storage area, accommodation for a permanent on-site manager and facilities for teaching groups of visiting children and adults alike. The arrangement of the buildings is to address the valley with a large open central meeting area, the orientation looking up to the Takitimus.

An all-weather, all-age, all-abilities track system will extend out from this core leading the visitor around a grand selection of different types of wetland, grassland, shrub and forest communities, both re-introduced and regenerating. There will be areas where individuals or groups can stop and have quiet reflective times, be involved in hands-on workshops or be lectured by various visiting skilled practitioners. In addition to this 'multi-use- track, there would be a more loosely formed track where the more fit and adventurous could take a long walk around the entirety of the valley.

The proposal seeks to nurture a sense and belief of traditional values in terms of land and resource management. Natural processes are foremost and the understanding of these is integral to the success of the vision. It is not so much about dictating through 2D plans, rather it provides the reader with cues as to how an individual might understand where they stand, literally, and what would be the most appropriate action on that spot, what would be the most natural, the most respectful. What could one do to trigger a sequence of events that would increase the rate at which the valley might *restore itself* too..









existing tussockland  
manage for weeds,  
allow to naturally  
progress to shrub  
stage

lower terrace - manage for shrub revegetation naturally. Remove weeds broom, gorse etc.



maintain existing  
tussocklands.  
Nurture, encourage  
shrub  
growth.

BUSH CLAD ESCARPMENT

kahifatea 'islands'

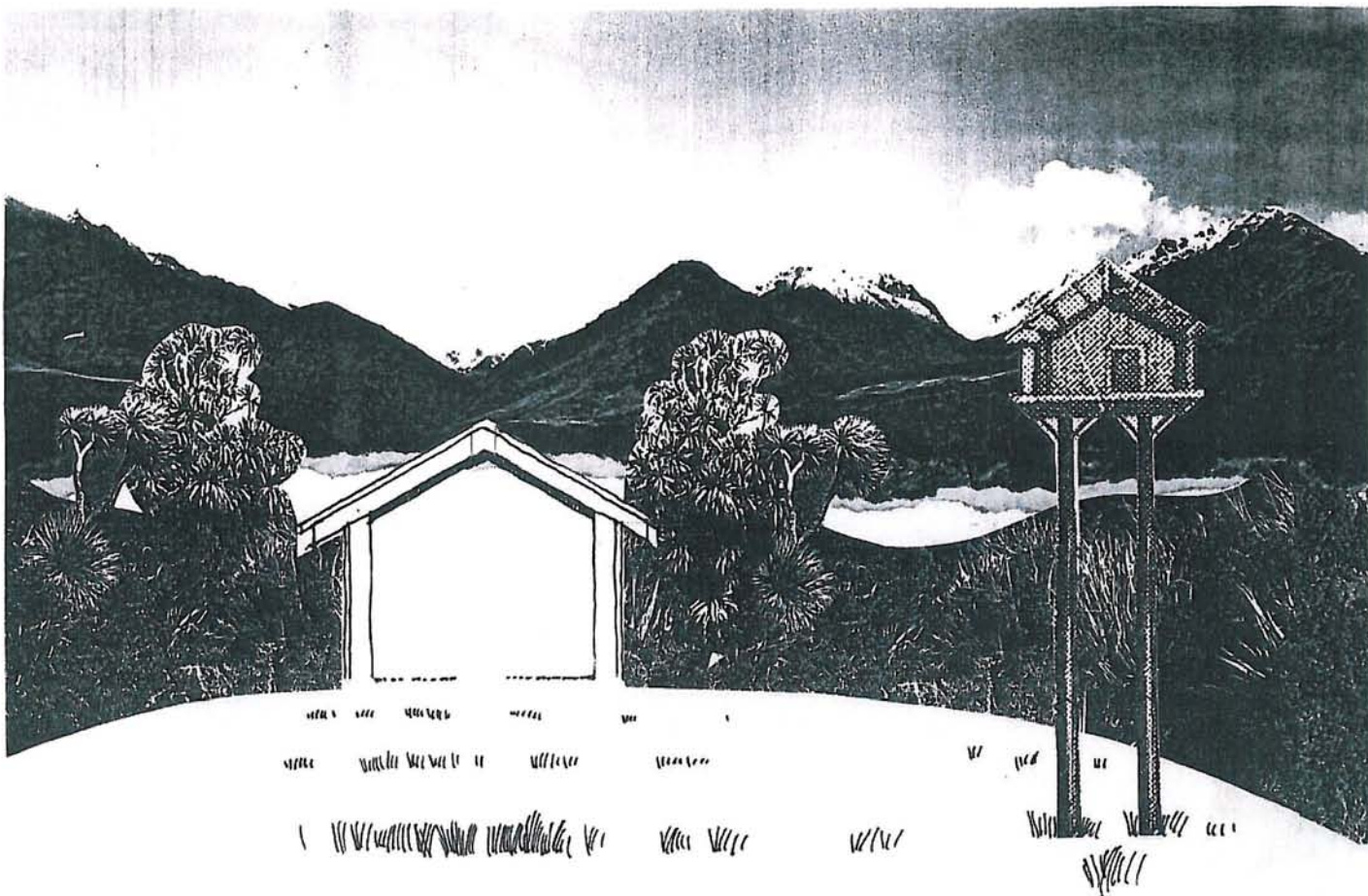
upper plateau  
manage for  
shrub  
regen.

establish a kahikatea  
wamp forest on toe  
lope along Jericho  
stream

# JERICO BLOCK SOUTHLAND

## CONCEPT PROPOSAL





## JERICO BLOCK SOUTHLAND

### JERICO KAIKA 'SKETCH'

*View looking from the verandah of the common room toward  
the Takitimu Range across the central open space*

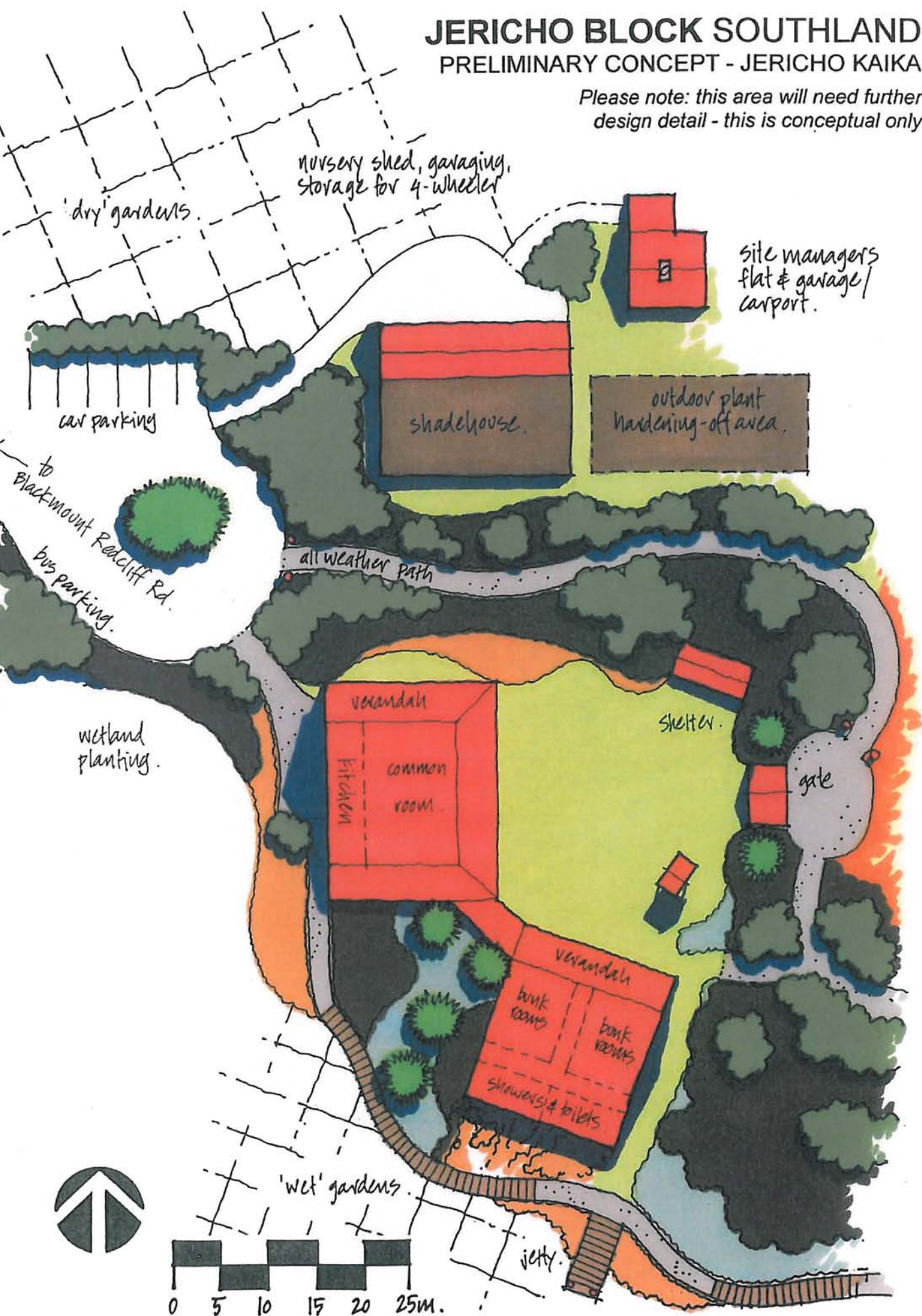
*Note: not to scale*



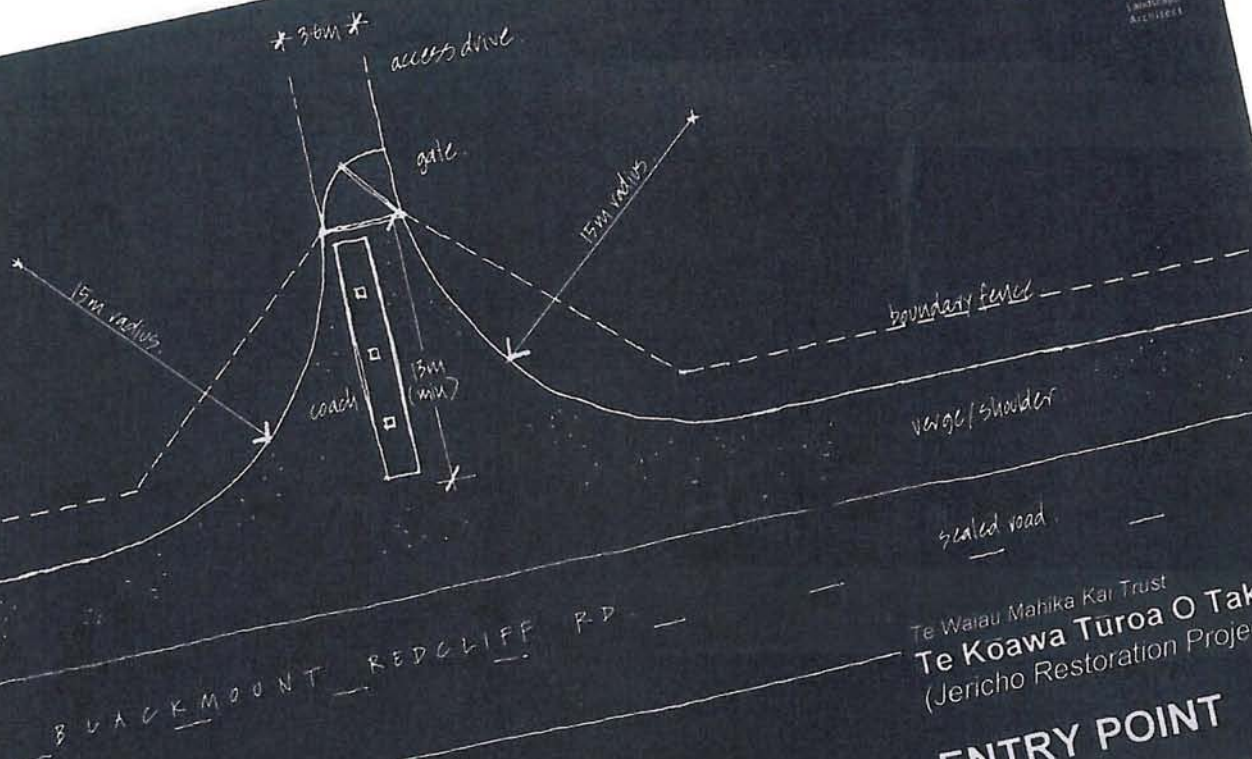
# JERICHO BLOCK SOUTHLAND

## PRELIMINARY CONCEPT - JERICHO KAIKA

Please note: this area will need further design detail - this is conceptual only







Te Waiiau Mahika Kai Trust  
**Te Kōawa Tūroa O Takitimu**  
(Jericho Restoration Project)

**ENTRY POINT**

June 12, 2002

**Lucas Associates**  
design by Jeremy Head  
Registered ANZILA Landscape Architect  
Marokapara  
351 Manchester Street  
Otautahi Christchurch  
tel. (03) 365 0789  
fax (03) 365 0798  
email: lucas.chch@xtra.co.nz



**Lucas Associates**  
design by Jeremy Head  
Registered ANZILA Landscape Architect  
Marokapara  
351 Manchester Street  
Otautahi Christchurch  
tel. (03) 365 0789  
fax (03) 365 0798  
email: lucas.chch@xtra.co.nz



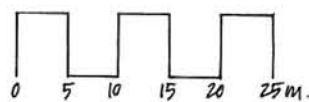
Te Waiiau Mahika Kai Trust  
**Te Kōawa Tūroa O Takitimu**  
(Jericho Restoration Project)

**LOCATION PLAN**  
**Kaika**

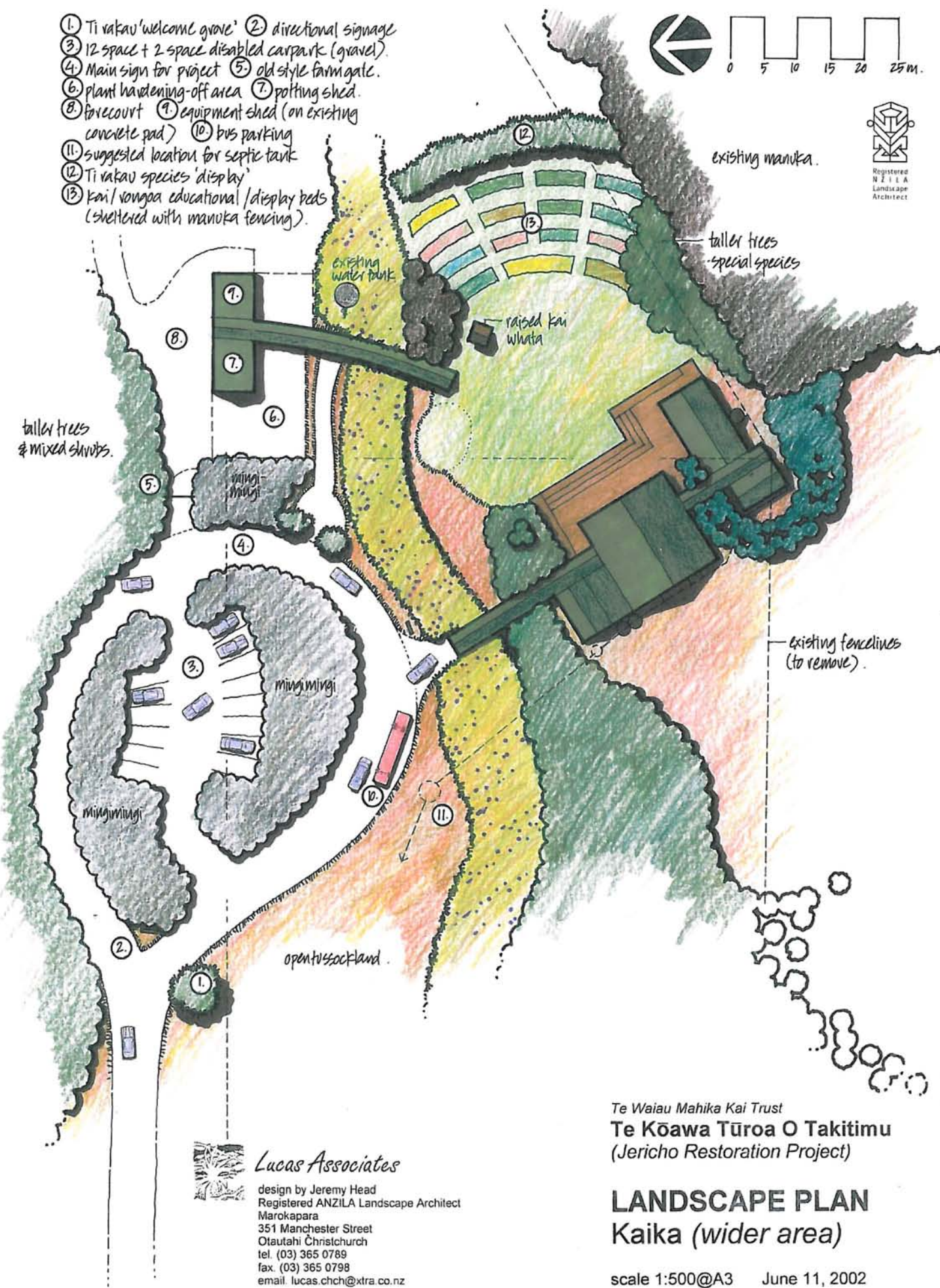
June 11, 2002



- ① Ti rakau 'welcome grove'
- ② directional signage
- ③ 12 space + 2 space disabled carpark (gravel)
- ④ Main sign for project
- ⑤ old style farm gate.
- ⑥ plant hardening-off area
- ⑦ potting shed.
- ⑧ forecourt
- ⑨ equipment shed (on existing concrete pad)
- ⑩ bus parking
- ⑪ suggested location for septic tank
- ⑫ Ti rakau species 'display'
- ⑬ kai / wongā educational / display beds (sheltered with manuka fencing).



Registered  
NZILA  
Landscape  
Architect



Te Waiau Mahika Kai Trust  
Te Kōawa Tūroa O Takitimu  
(Jericho Restoration Project)

## LANDSCAPE PLAN Kaika (wider area)

scale 1:500@A3 June 11, 2002







view looking southwest from  
approximately point (5)  
on LANDSCAPE PLAN



view looking east from  
behind the kitchen block (at left)  
and ablution block (at right)



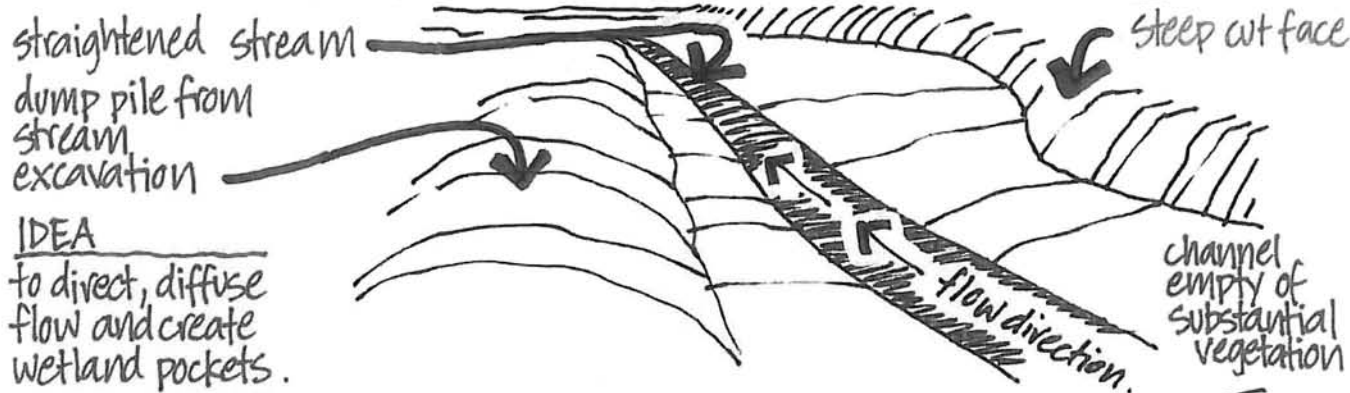
Te Waiau Mahika Kai Trust  
**Te Kōawa Tūroa O Takitimu**  
(Jericho Restoration Project)

**DURING CONSTRUCTION PHASE, WITH  
RELOCATED BUILDINGS ON SITE**  
(with proposed walkway, decking and pergola superimposed)

photographs by Richard Parata, October 2002



## PRESENT SITUATION

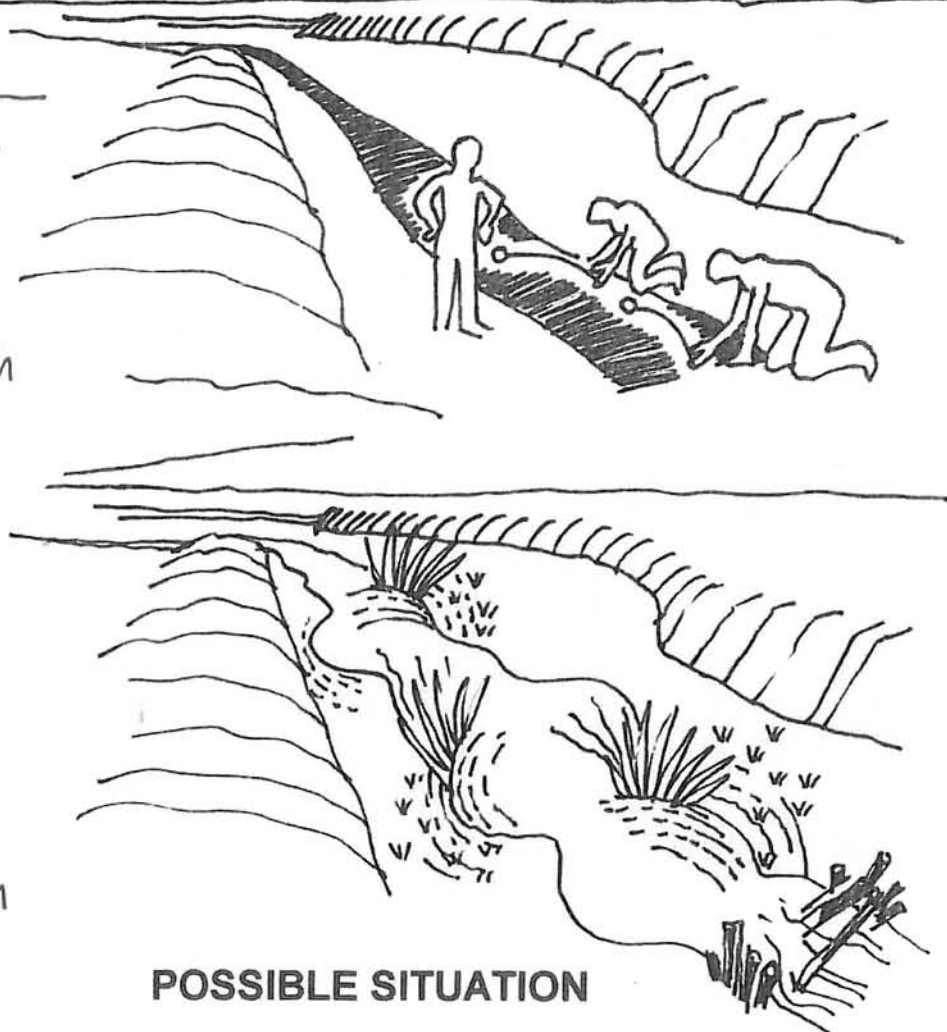


### IDEA

to direct, diffuse flow and create wetland pockets.

### HOW TO

1. make raupo balls and tether with 2-3 metres of string
2. watch how they flow...
3. note where they touch the bank...
  - this is where the harakeke will be planted.
4. but first, dam upstream with manuka logs, then plant.
  - when the logs have rotted, the harakeke will be strong enough to take the flow.



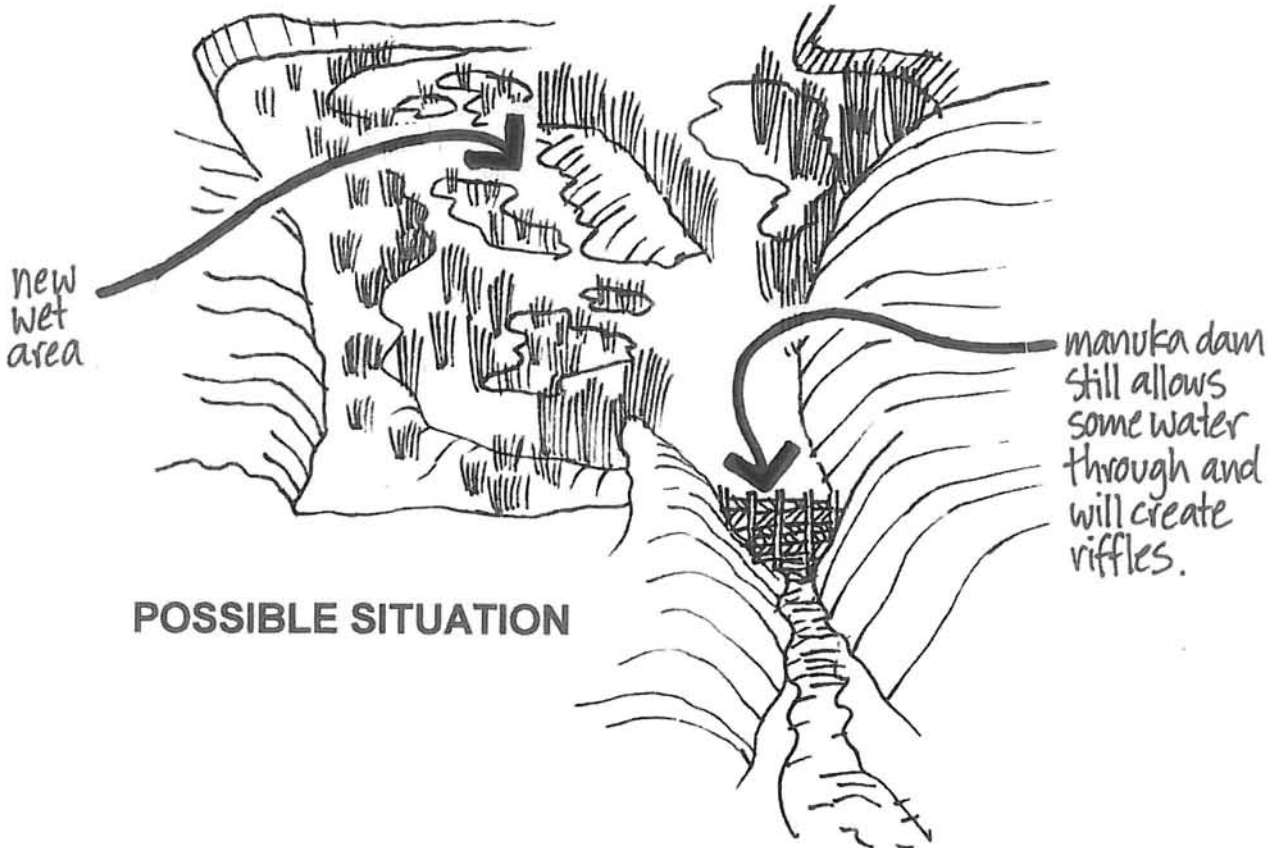
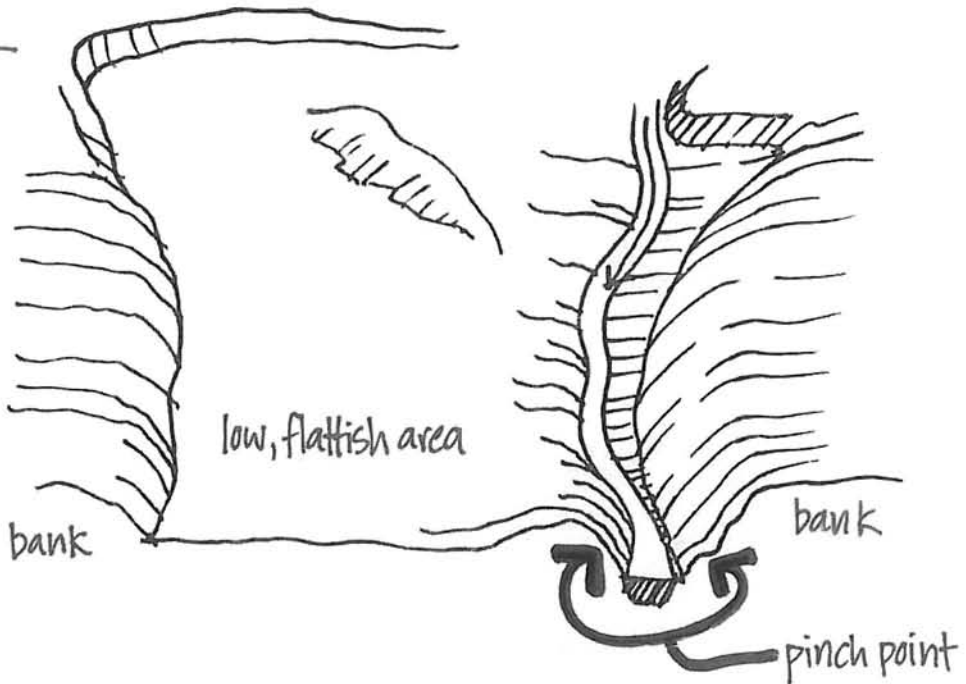
## POSSIBLE SITUATION



## PRESENT SITUATION

### LOOK FOR

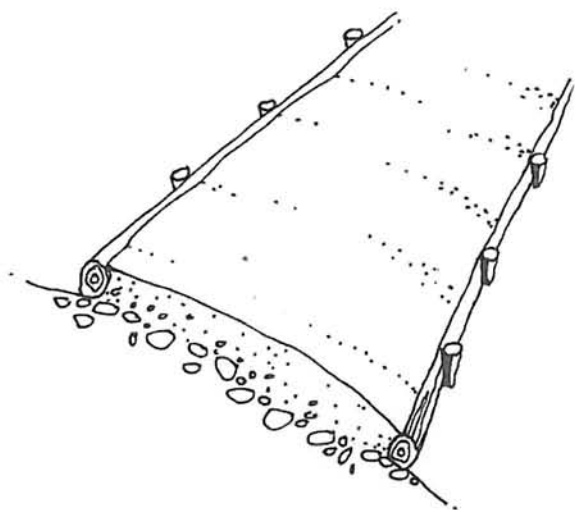
1. a natural or artificial pinch point between two higher banks...
2. an area behind with a bit of width to allow for wet areas to form...



## POSSIBLE SITUATION

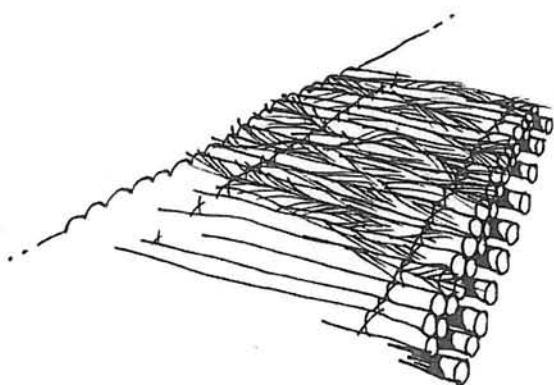
# JERICO BLOCK SOUTHLAND

TRADITIONAL STREAM MANIPULATION TECHNIQUES



### Gravel track

If you want to build a track on **drier, stony ground**, consider forming the edges with manuka branches, well pegged with manuka and filled between with compacted Waiau gravels...

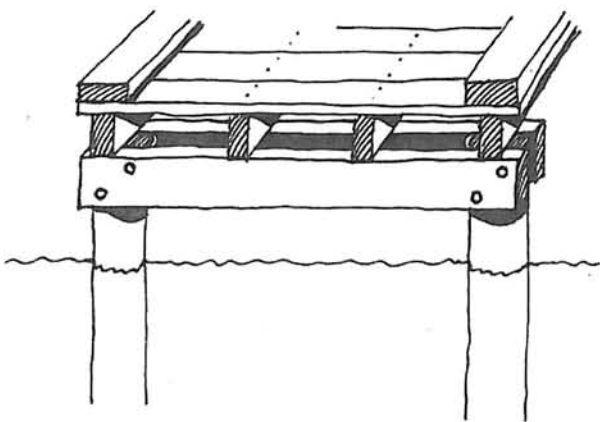


### Brush track

If your track is passing through **wet or boggy ground**, most likely through the existing manuka forest, you could make a relatively dry walking surface through the use of many manuka branches and sticks of varying sizes lashed together...

### Boardwalk

With the creation of areas of limited **standing water** or areas frequently inundated, it is advisable to build a structure that is well above ground (and water) level. Perhaps the Conservation Corps can build these. Materials used could be ground durable timber or, if necessary, ground treated timber - preferably using non-harmful preservatives.



It will be necessary to have more detailed design to construct the raised timber boardwalk. The Department of Conservation has information on design, specifications etc. You will need to access these at least, and if not, use professional help. There are various safety considerations to be aware of.

**JERICHO BLOCK SOUTHLAND**  
TRACK / BOARDWALK POSSIBILITIES - CONCEPT ONLY



# FULL PLANT LIST

An extensive plant list of local native species understood to belong in the Jericho Block, whether or not currently present

Botanical name	Common name												
TALL TREES													
● <i>Carpodetus serratus</i>	putaputaweta/marbleleaf						B						6
● <i>Dacrycarpus dacrydioides</i>	kahikatea						B		K	R			8
● <i>Elaeocarpus hookerianus</i>	pokaka						B		K				6
● <i>Nothofagus menziesii</i>	silver beech							N					4
● <i>Nothofagus solandri</i> var. <i>cliffortioides</i>	mountain beech							N					4
● <i>Plagianthus regius</i>	manatu/lowland ribbonwood						B						5
● <i>Podocarpus hallii</i>	Halls or thin barked totara						B	N	K	R			8
● <i>Prumnopitys taxifolia</i>	matai						B		K	R			8
TREES AND SHRUBS													
● <i>Aristotelia fruticosa</i>	mountain wineberry						B						2
● <i>Aristotelia serrata</i>	mako/makomako/wineberry						B		K	R			2
● <i>Carmichaelia virgata</i>	native broom												1
● <i>Carpodetus serratus</i>	putaputaweta/marbleleaf						B						6
● <i>Coprosma cheesemamii</i>	a coprosma												
● <i>Coprosma linarifolia</i>	a coprosma						B	N					1
● <i>Coprosma lucida</i>	karamū						B		K	R			2
○ <i>Coprosma obconica</i>	a coprosma						B						2
○ <i>Coprosma pedicellata</i>	a coprosma												
● <i>Coprosma propinqua</i>	mingimingi						B		K		NP		1
● <i>Coprosma rigida</i>	a coprosma						B				NP		1
● <i>Coprosma rotundifolia</i>	round-leaved coprosma						B				NP		1
● <i>Coprosma rugosa</i>	a coprosma						B						1
● <i>Coprosma</i> sp. aff. <i>intertexta</i>	low coprosma shrub						B						1
● <i>Coprosma</i> sp. aff. <i>parviflora</i>	a coprosma						B						1
○ <i>Coprosma wallii</i>	a coprosma						B						2
● <i>Cordyline australis</i>	Ti rakau/Ti/cabbage tree/Ti kouka						B	N	K	R	NP		3
● <i>Coriaria sarmentosa</i>	tutu							N		R	NP		2
● <i>Corokia cotoneaster</i>	korokio						B	N		R			1
● <i>Discaria toumatou</i>	matagouri							N					2
● <i>Dracophyllum longifolium</i>	inanga												5
● <i>Fuchsia excorticata</i>	kotukutuku/tree fuchsia						B	N	K	R			5
● <i>Gaultheria macrostigma</i>	red snow berry						B		K	R			1
● <i>Gaultheria depressa</i>	snow berry								K	R			
● <i>Griselinia littoralis</i>	kapuka/broadleaf						B	N		R			3
● <i>Halocarpus bidwillii</i>	bog pine						B						3
● <i>Hebe odora</i>	hebe												1
● <i>Hebe salicifolia</i>	kokomuka/koromiko									R			1
● <i>Leptospermum scoparium</i>	manuka							N	K	R	NP		2
● <i>Leucopogon fraseri</i>	patotara/dwarf mingimingi								K				1
● <i>Melicope simplex</i>	poataniwha						B						5
● <i>Melicytus</i> aff. <i>alpinus</i>	porcupine shrub						B						1
○ <i>Melicytus flexuosus</i>													
● <i>Melicytus lanceolatus</i>	narrow-leaved mahoe												
● <i>Muehlenbeckia axillaris</i>	dwarf pohuehue						B						1
● <i>Myrsine australis</i>	mapou/red mapou						B			R			3
● <i>Myrsine divaricata</i>	weeping mapou						B						3
● <i>Olearia arborescens</i>	common tree daisy												5
● <i>Olearia bullata</i>	a shrub daisy												2
○ <i>Olearia fragrantissima</i>	fragrant tree daisy												5

○ = threatened species    P = poisonous plant    initially plant lots (●), plant some (●)



# FULL PLANT LIST (trees & shrubs continued)

An extensive plant list of local native species understood to belong in the Jericho Block, whether or not currently present

Botanical name		Common name											
• ○	<i>Olearia hectori</i>	olearia											5
•	<i>Ozothamnus leptophylla</i>	cottonwood											1
•	<i>Ozothamnus vauvilliersii</i>	cottonwood											
•	<i>Pittosporum eugenioides</i>	tarata/lemonwood						B		K	R		5
●	<i>Pittosporum tenuifolium</i>	rautawhiri/kōhūhū/black mapou						B		K			3
•	<i>Pseudopanax crassifolius</i>	horoeke/lancewood						B	N				2
• ○	<i>Pseudopanax ferox</i>	horoeke/fierce/toothed lancewood						B	N				2
●	<i>Pseudopanax</i> sp. aff. <i>colensoi</i>	three finger						B					3
•	<i>Pseudowintera colorata</i>	horopito/peppertree/ramarama						B			R		3
● P	<i>Sophora microphylla</i>	South Island kowhai						B	N		R		5
CLIMBERS													
•	<i>Clematis paniculata</i>	pua wananga/bush clematis								N	R		—
•	<i>Clematis quadribacteolata</i>	purple-flowered clematis											
•	<i>Muehlenbeckia complexa</i>	small-leaved pohuehue								K			—
•	<i>Parsonsia heterophylla</i>	native jasmine/kaihua									R		—
•	<i>Rubus cissoides</i>	a native lawyer/tataramoa								K	R		
•	<i>Rubus schmelidoides</i>	a native lawyer/tataramoa								K			
GRASSES AND FLAX-LIKE PLANTS													
•	<i>Aciphylla aurea</i>	taramea/golden spaniard						B			R		1
●	<i>Astelia nervosa</i>	a lily						B			R		1
	<i>Baumea tenax</i>	a sedge											1
• ○	<i>Carex capillaris</i>	a sedge											1
•	<i>Carex coriacea</i>	cutty grass											1
	<i>Carex dipsacea</i>	a sedge											1
●	<i>Carex flagellifera</i>	mania/a sedge											1
	<i>Carex flaviformis</i>	a sedge											1
•	<i>Carex gaudichaudiana</i>	a sedge											1
●	<i>Carex secta</i>	a sedge											1
• ○	<i>Carex tenuiculmis</i>	a red sedge											1
	<i>Carpha alpina</i>	a sedge											1
•	<i>Chionochloa rigida</i>	snow tussock											0.5
●	<i>Chionochloa rubra</i>	red tussock									R		1
●	<i>Cortaderia richardii</i>	toetoe										NP	2
• ○	<i>Deschampsia caespitosa</i>												
●	<i>Eleocharis acuta</i>	a spike rush											0.5
	<i>Eleocharis gracilis</i>	a spike rush											0.5
	<i>Empodisma minus</i>	wirerush											0.5
•	<i>Hierochloa redolens</i>	scented or holy grass/kāretu								K	R		
	<i>Isolepis calagenis</i>	a dwarf sedge											
	<i>Isolepis habra</i>	a dwarf sedge											
●	<i>Juncus gregiflorus</i>	a rush/wiwi									R		0.5
•	<i>Lepidosperme australe</i>	square sedge											
	<i>Luzula</i> sp.	a woodrush											0.5
	<i>Oreobolus strictus</i>	a comb sedge											
●	<i>Phormium tenax</i>	harakeke/lowland flax							N	K	R	NP	1.5
•	<i>Poa cita</i>	wi/silver tussock											0.5
•	<i>Poa colensoi</i>	blue tussock											0.5
	<i>Rytidosperma gracile</i>	a grass											
	<i>Uncinia rubra</i>	red hook grass											

○ = threatened species

● = poisonous plant

initially plant lots (●), plant some (•)



# FULL PLANT LIST (grasses & flax-like plants continued)

An extensive plant list of local native species understood to belong in the Jericho Block, whether or not currently present

		Locations					uses				plant spacings (in metres)	
		lower red tussock wetland	main valley floor	wet slopes	sunny slopes	top terrace	berry/fruit	nectar	kai	rongoa	nurse plants	
ed)												
												0.5
									K	R		0.5
												0.5
										R		1
									K			0.5
												0.5
												0.5
												0.5
												3
												0.5
												0.5
									K			1
									K	R		0.5
												1
									K	R		
										</		

○ = threatened species      initially plant lots (●), plant some (•)

# FULL PLANT LIST (herbs & ground covers continued)

An extensive plant list of local native species understood to belong in the Jericho Block, whether or not currently present

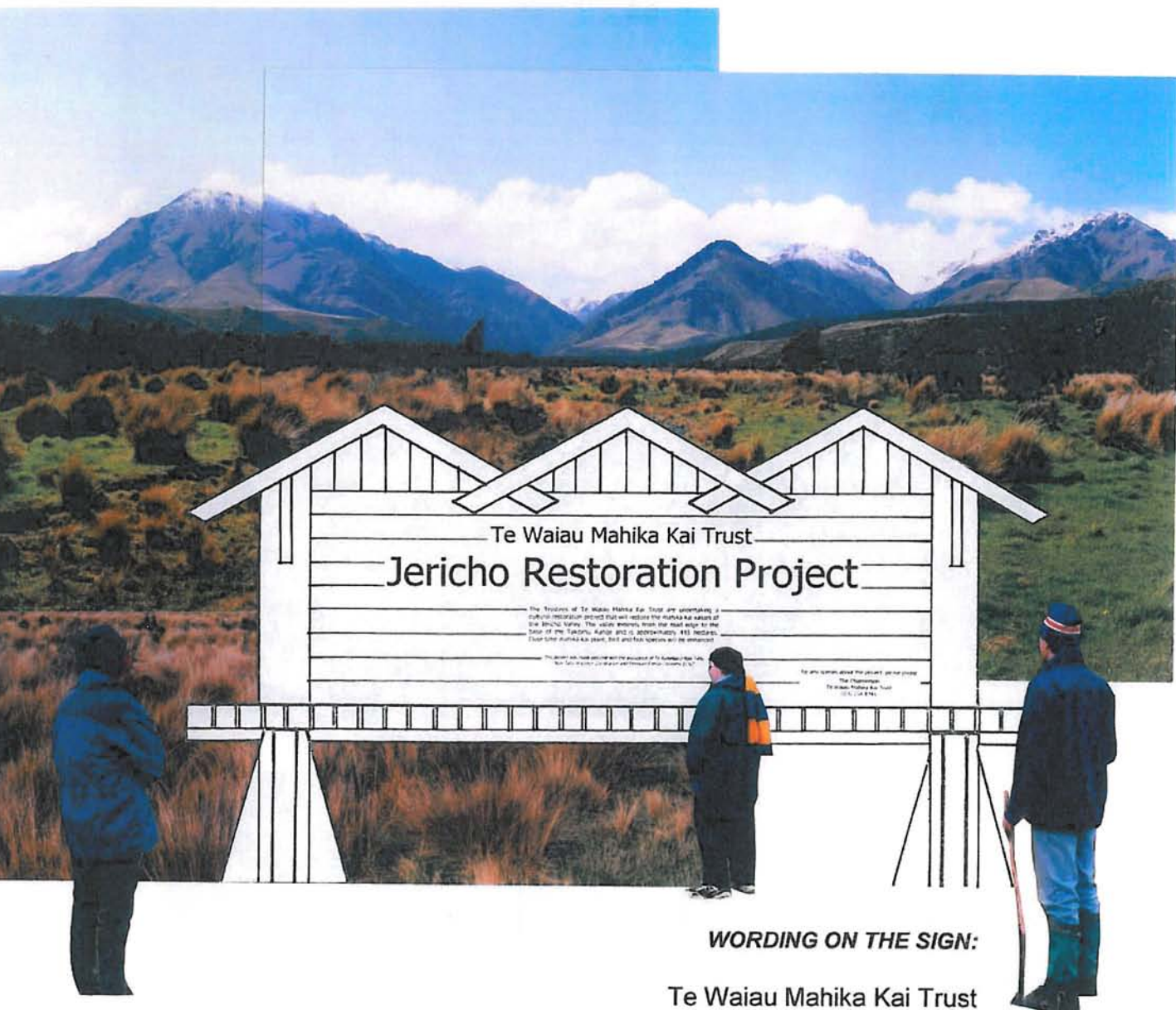
# FULL PLANT LIST (herbs & ground covers continued)

An extensive plant list of local native species understood to belong in the Jericho Block, whether or not currently present

		lower red tussock wetland	main valley floor	wet slopes	sunny slopes	top terrace	berry/fruit	nectar	kai	rongoa	nurse plants	plant spacings (in metres)
		Locations										uses
Botanical name	Common name											
<i>Plantago triandra</i>	a plantain									R		
<i>Potamogeton</i> sp.	rerewai/pondweed								K			
<i>Prasophyllum colensoi</i>	leek orchid											
<i>Pratia angulata</i>	a creeping herb								K			
<i>Pseudognaphalium luteo-album</i>	Jersey cudweed											
P <i>Ranunculus foliosus</i>	a buttercup											
P <i>Ranunculus glabrifolius</i>	a bog buttercup											
P O <i>Ranunculus reflexus</i>	a buttercup											
P <i>Ranunculus ternatifolius</i>												
<i>Rubus</i> spp.												
<i>Schizeilema cockaynei</i>	a herb											
<i>Senecio minimus</i>	fireweed											
<i>Sphagnum</i> sp.	sphagnum moss											
<i>Thelymitra longifolia</i> var. <i>montana</i>	white sun orchid											
<i>Utricularia monanthos</i>	bladderwort											
<i>Viola cunninghamii</i>	a native violet											
<i>Wahlenbergia albomarginata</i>	harebell											

O = threatened species      P = poisonous plant





#### WORDING ON THE SIGN:

### Te Waiau Mahika Kai Trust Jericho Restoration Project

The Trustees of Te Waiau Mahika Kai Trust are undertaking a cultural restoration project that will restore the mahika kai values of the Jericho Valley. The valley extends from the road edge to the base of the Takitimu Range and is approximately 445 hectares. Over time mahika kai plant, bird and fish species will be enhanced.

for any queries about the project, please phone:

The Chairperson,  
Te Waiau Mahika Kai Trust  
(03) 234 8745

*This project was made possible with the assistance of Te Runanga o Ngai Tahu,  
Ngai Tahu Holdings Corporation and Meridian Energy (formerly ECNZ)*

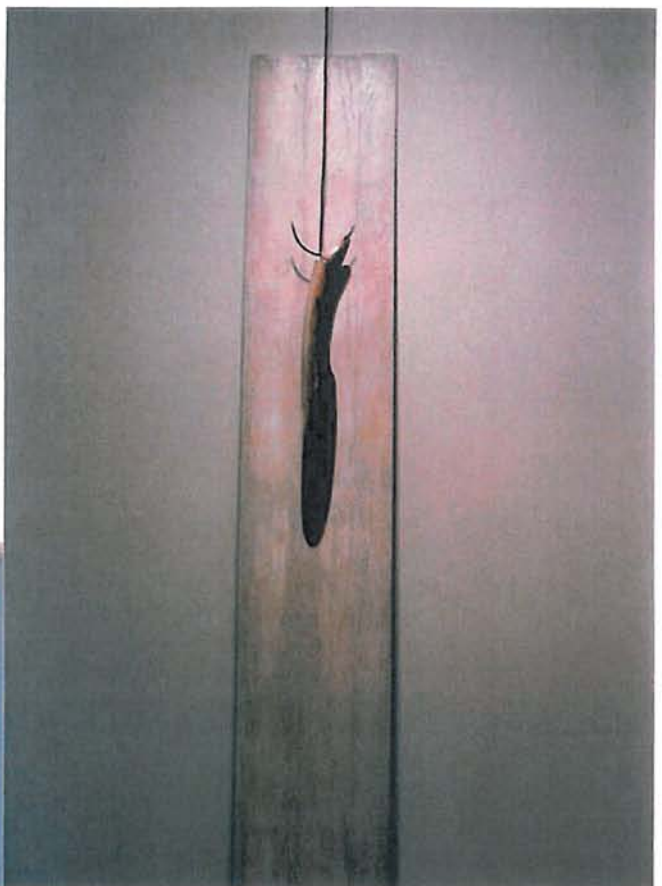
#### SIGN DESIGN:

The design of the signboard is preliminary only. Further detailed drawings will be required. The design of the sign reflects three major peaks of the Takitimu Range, the thick buttressed trunks of the kahikatea, and the raised whata food storehouse.

Materials are shown as timber, possibly utilising manuka in places.

The sign measures 2 metres above ground by 3.5 metres wide.

**JERICO BLOCK SOUTHLAND**  
ENTRANCE SIGN ON BLACKMOUNT REDCLIFF ROAD

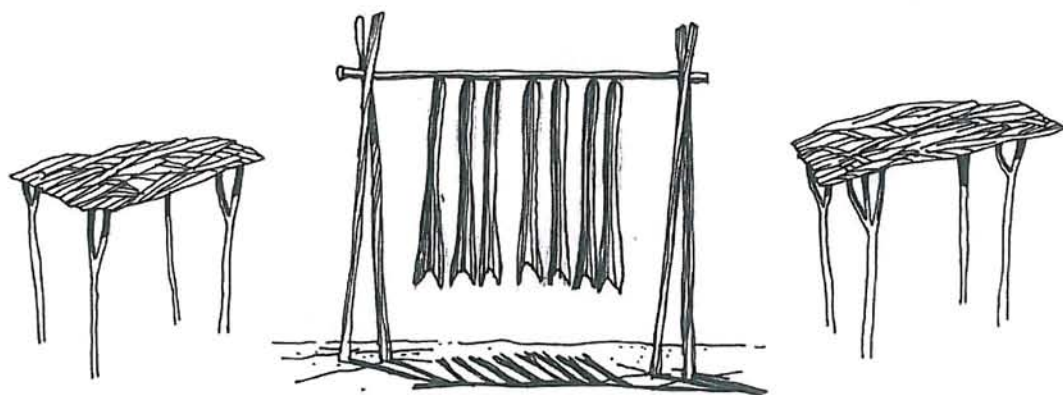
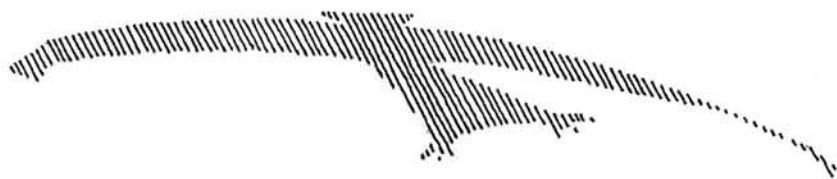
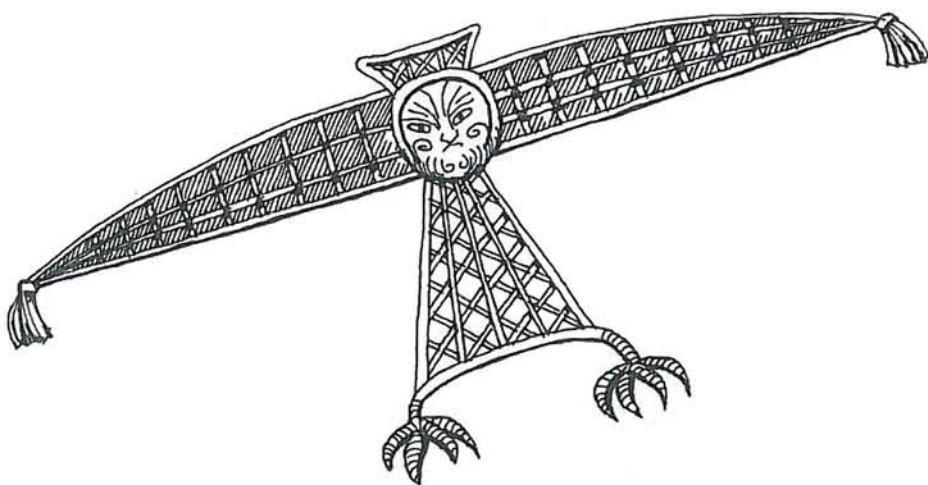


sculptures by Bing Dawe

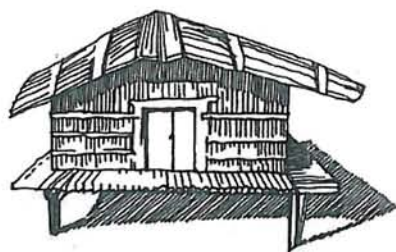
To enhance the interpretation of mahika kai, use of the arts is proposed. Perhaps cooperative projects with professional artists... Bing Dawe, sculptor (pictured) has produced many works involving eel, lamprey, inanga and patiki, and fish traps, as well as with native birds, in bronze, timber and aluminium.







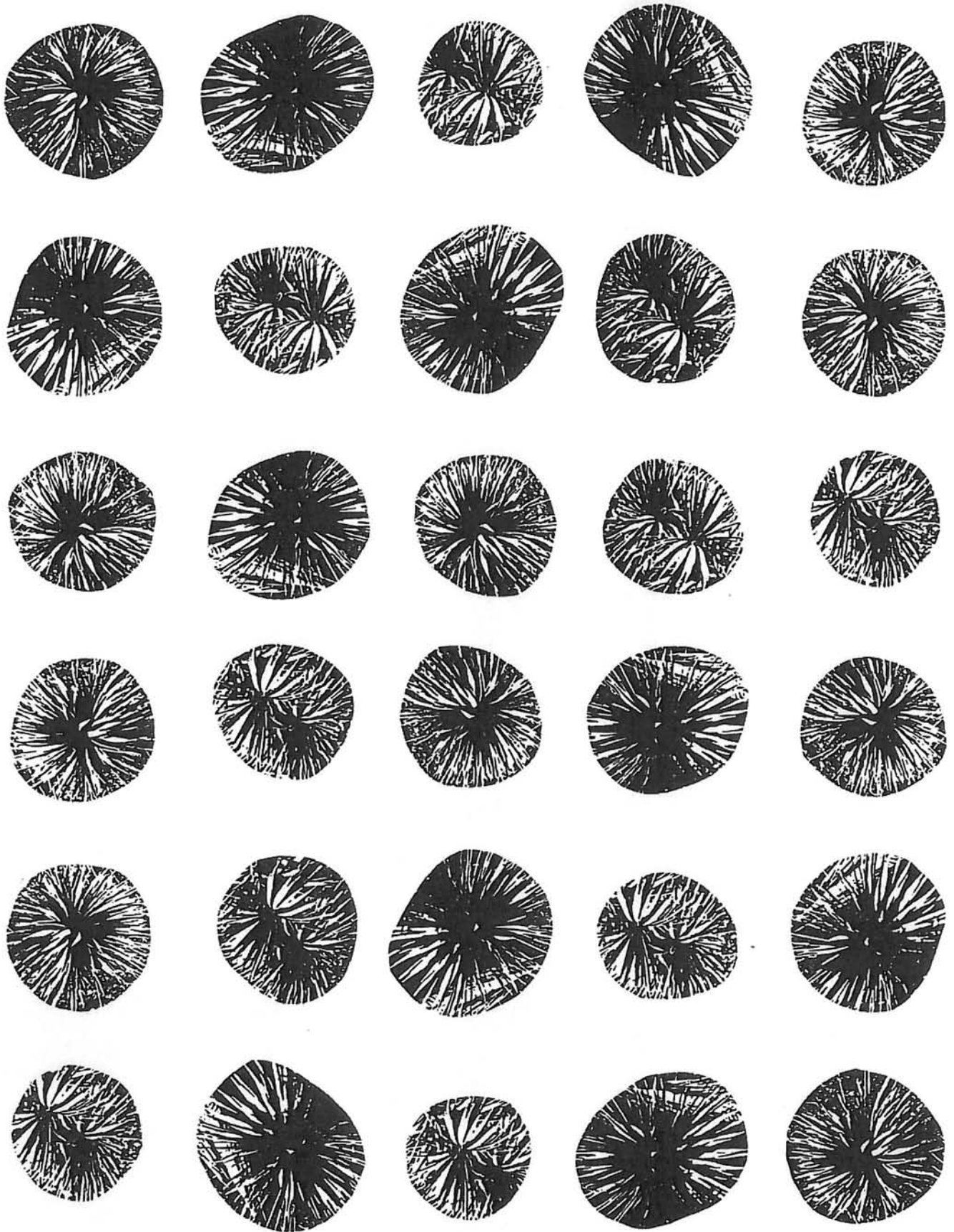
...exploring the old traditions and materials of the site...



...working with traditional and modern arts and crafts and interpretation for enhanced understanding of mahika kai...



**JERICO BLOCK SOUTHLAND**  
THE ARTS AND INTERPRETATION OF MAHIKA KAI



PERHAPS A 'TI GARDEN...?'