

Whakakaiwhara

attachments

to the evidence of Di Lucas Registered NZILA Landscape Architect

Wairoa River Maritime Village, Clevedon, March 2009

Wairoa River Maritime Village

The Site 



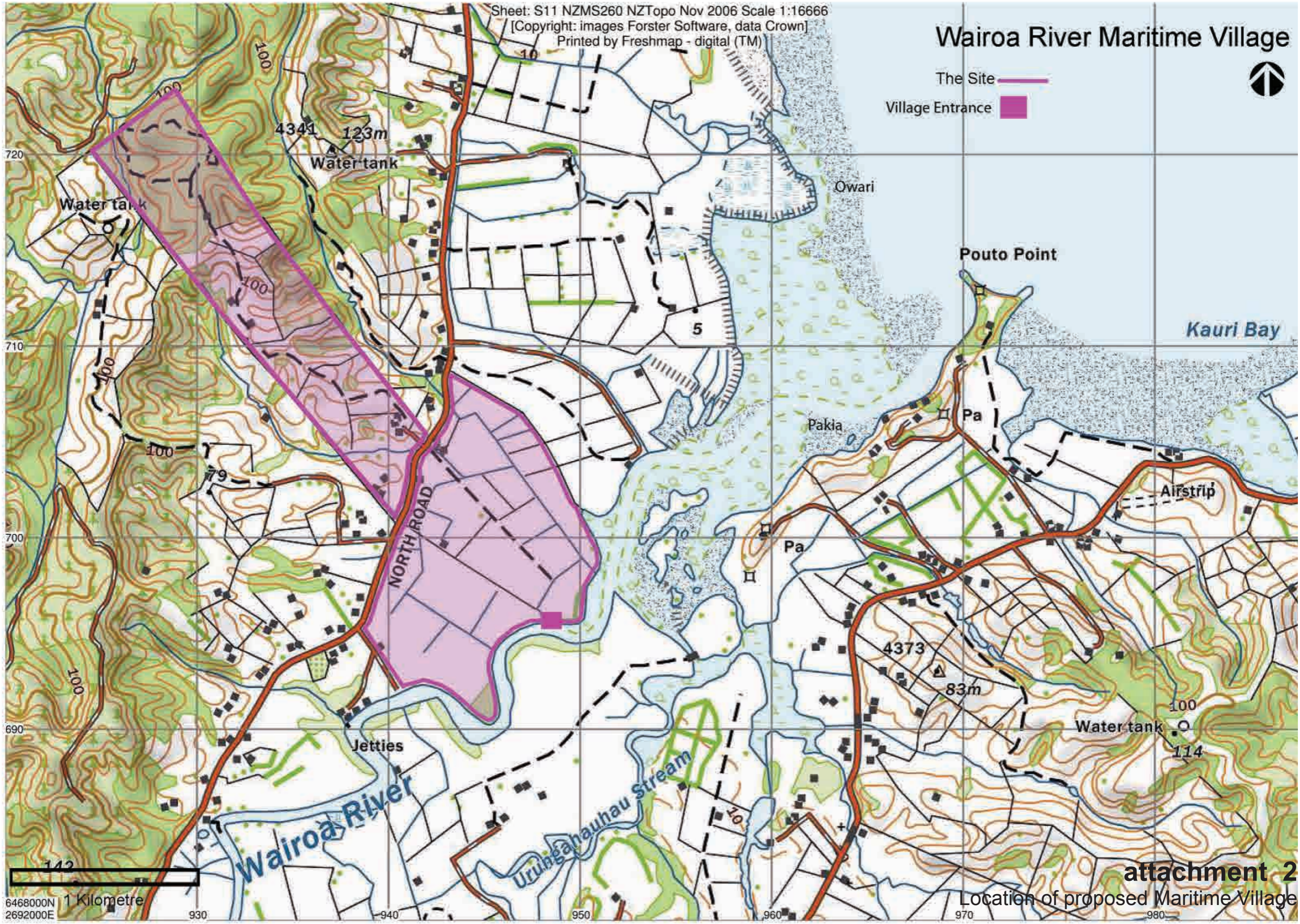
attachment 1

location of proposed Maritime Village

Wairoa River Maritime Village



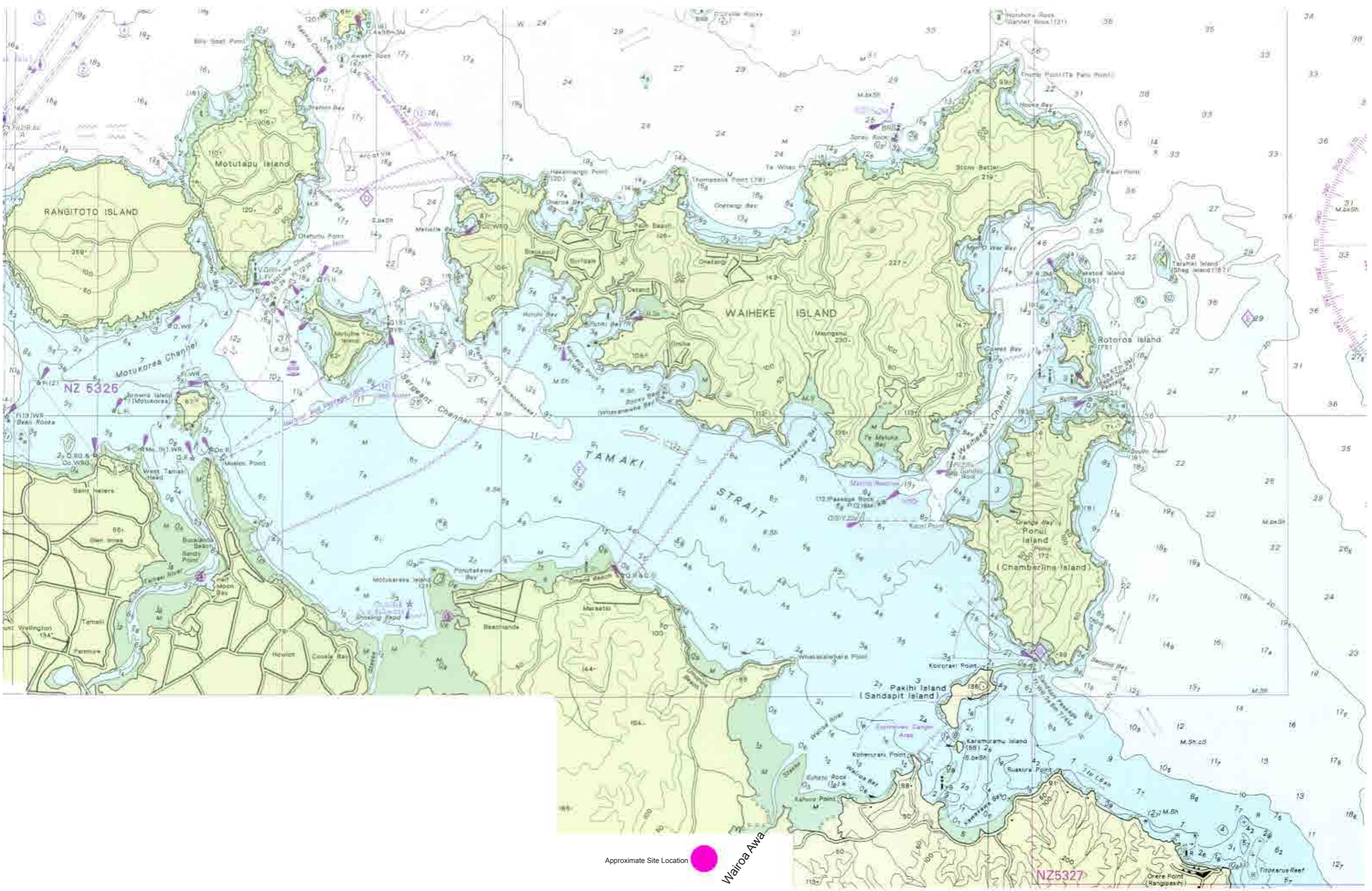
The Site 
Village Entrance 



6468000N 1 Kilometre
2692000E

attachment 2

Location of proposed Maritime Village



indicative only

Approximate Site Location

Wairoa Awa

attachment 3

Te Wairoa Water Ways Context
(LINZ Hydrograph 1999)



Key

 Te Wairoa Catchment Boundary

 Proposed Wairoa Maritime Village

attachment 4
Te Wairoa Catchment



Geographx (NZ) Ltd 2009
Base photo 2003/04

 Village Site



Geographx (NZ) Ltd 2009
Base photo 2003/04

 Village Site



Te Wairoa O Muriwai, from Koherurahi (left) to Whakakaiwhara (right)

Geographx (NZ) Ltd 2009
Base photo 2003/04

 Village Site



Tauranga Kawau & Taka te Kauere lie on the estuarine floodplains that include the site between the promontories of Pouto & Pehowai

Geographx (NZ) Ltd 2009
Base photo 2003/04

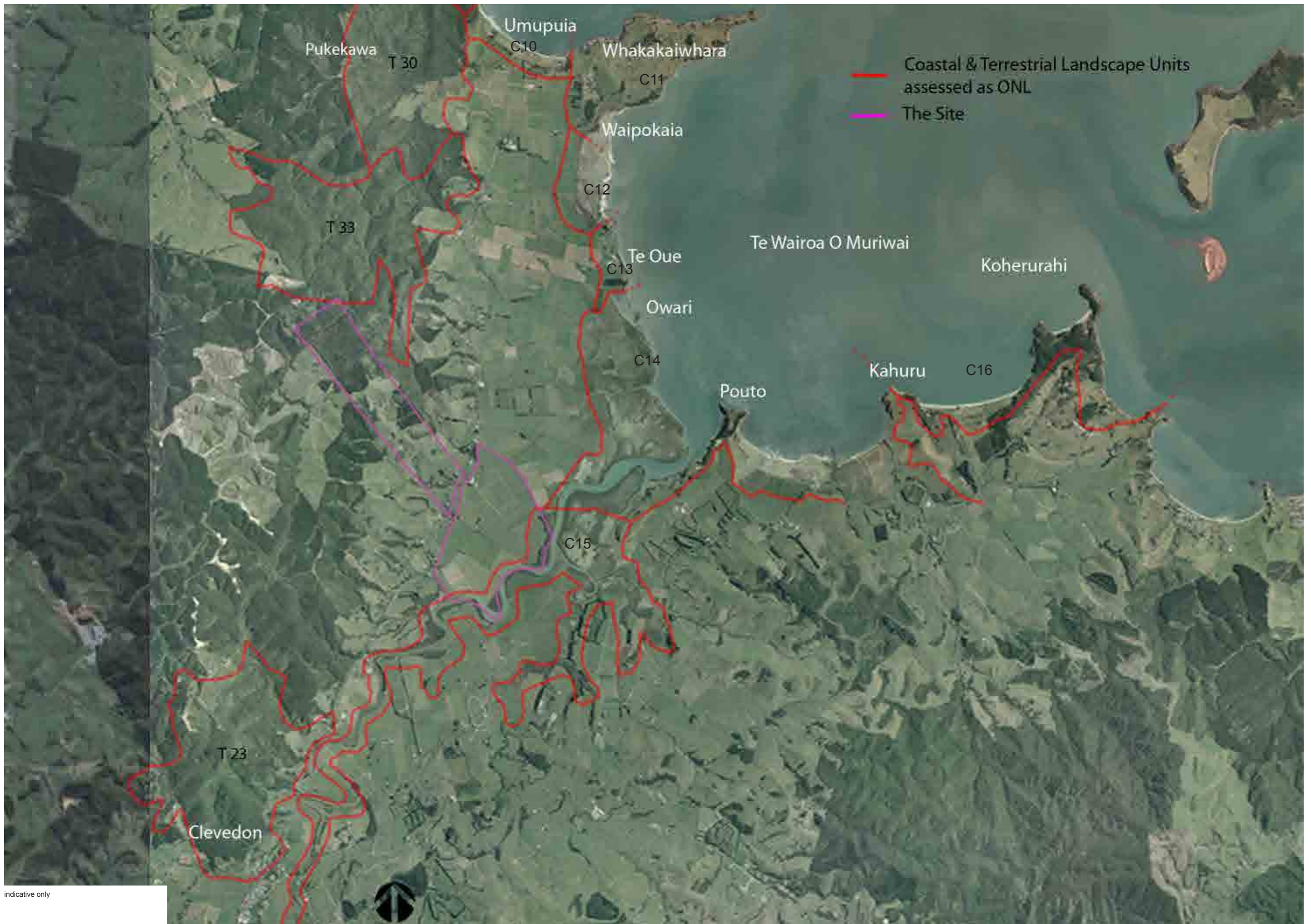
 Village Site



Key

- Visual Amenity (ARC 2002)
- Regionally Significant Landscape 5 (ARC 2002)
- Outstanding Natural Landscapes (ARC Change 8 2005)
- Te Wairoa Catchment Boundary
- Proposed Wairoa Maritime Village Site

indicative only



indicative only



Locator Map



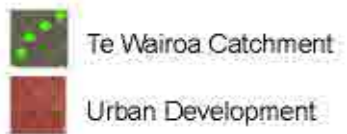
(A) Tamaki River



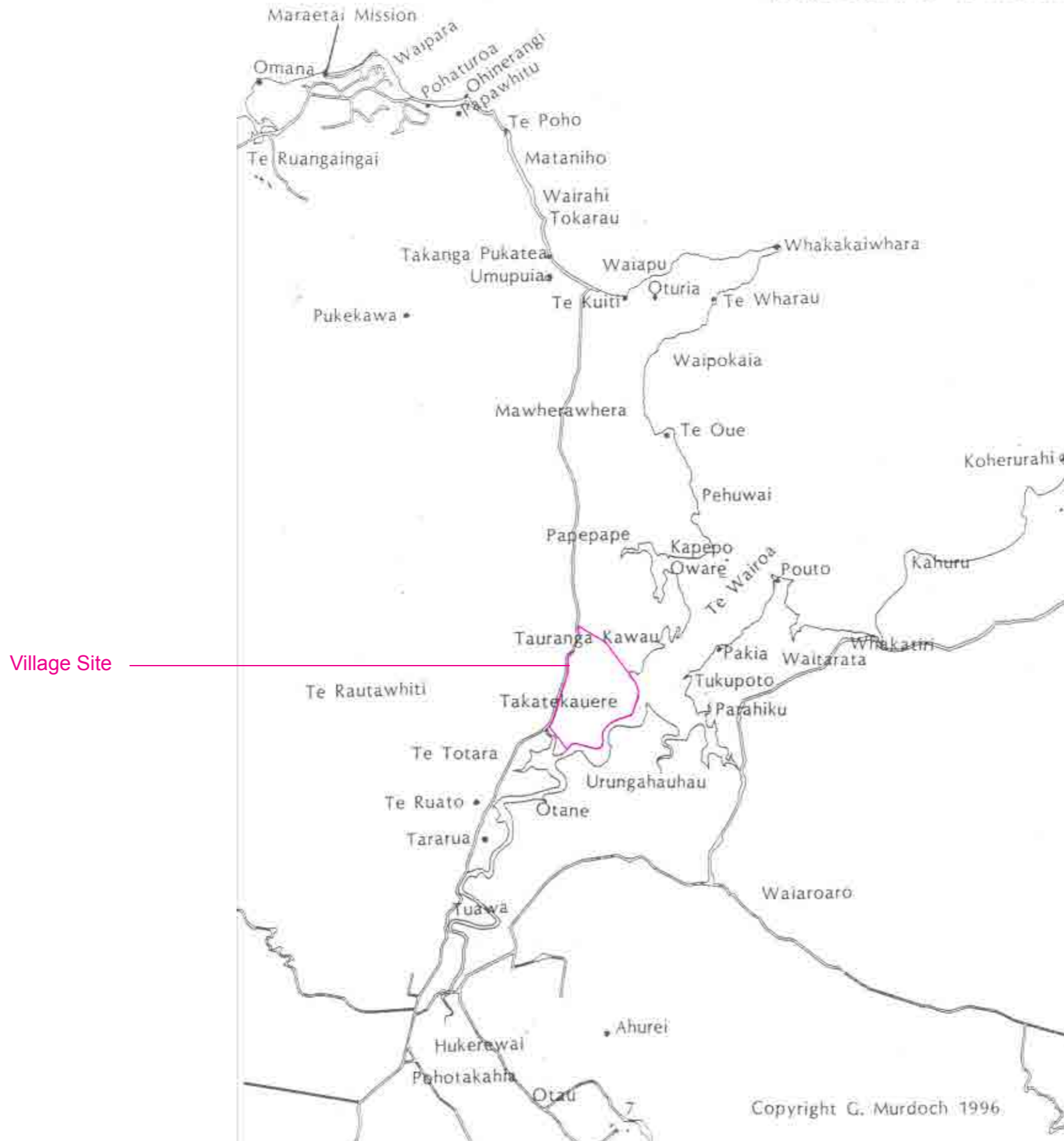
(B) Turanga Creek, Waikopua Creek & Mangemangeroa Creek



(C) Wairoa River



MAORI PLACENAMES - TE WAIROA



A History of Human Occupation of the Whakakaiwhara Block.
Prepared by G.J Murdoch for the ARC Regional Parks Service, 1996

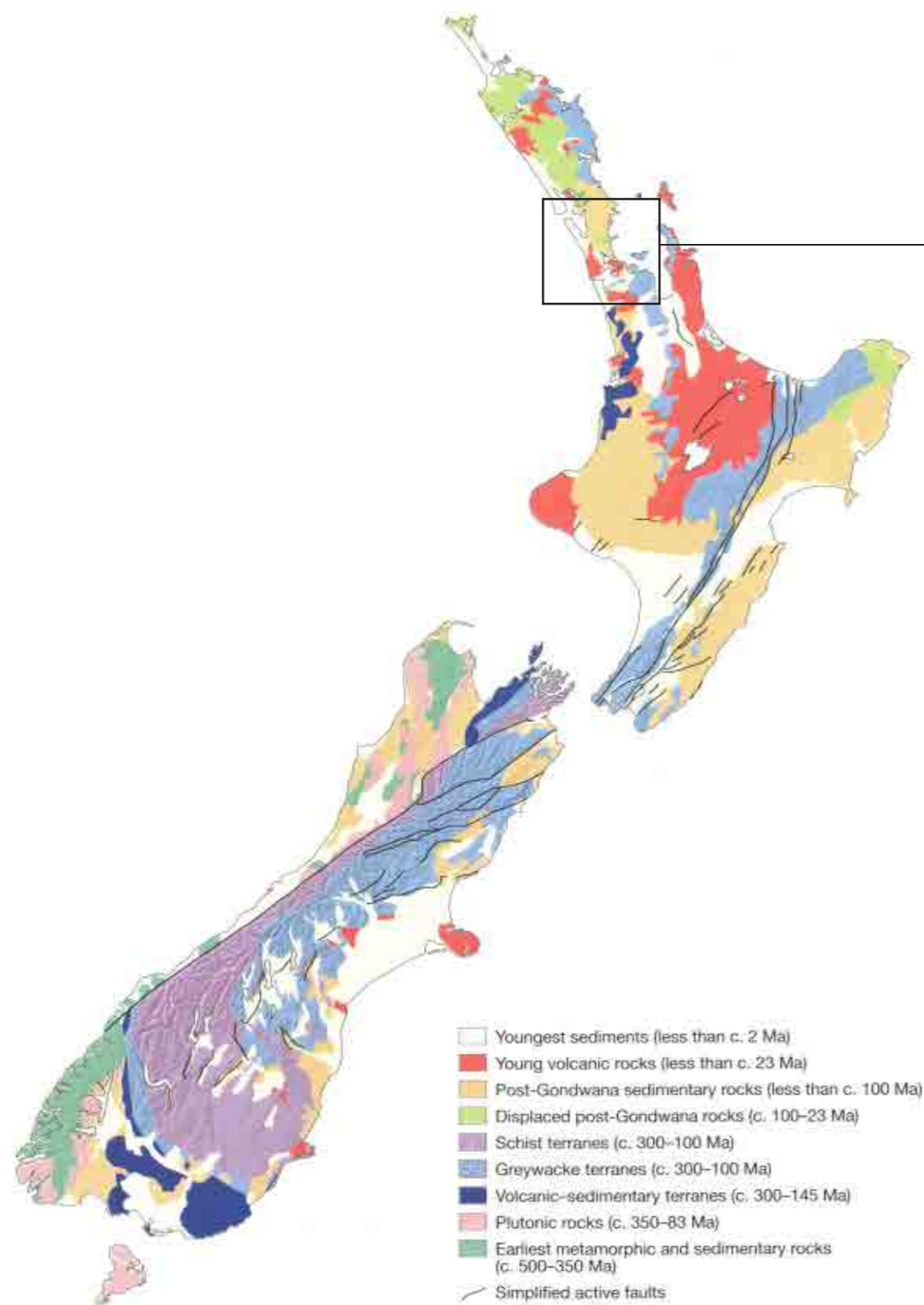


Fig.1

A Continent on the Move, New Zealand Geoscience into the 21st Century, Graham I J, 2008, pg 31

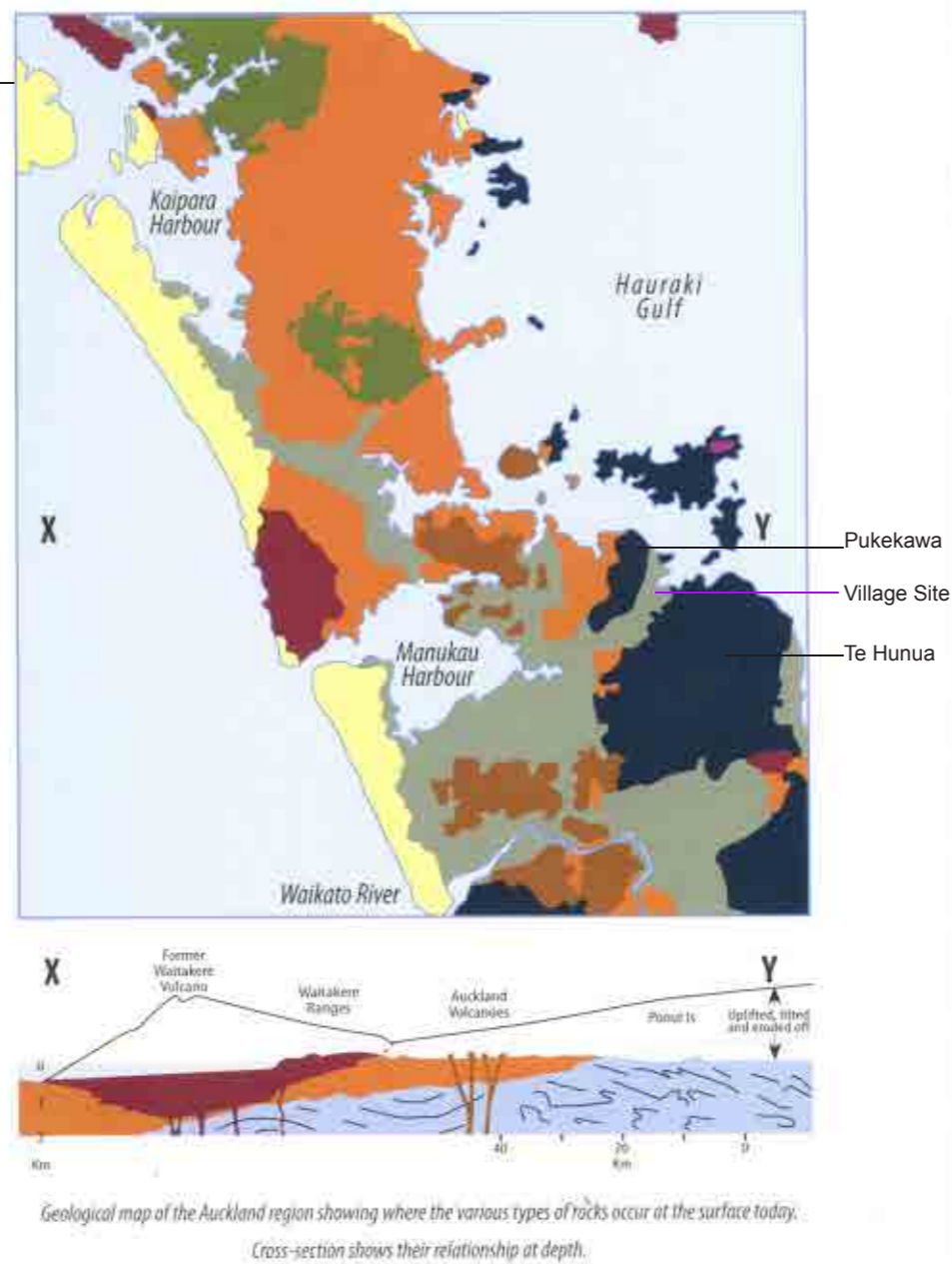
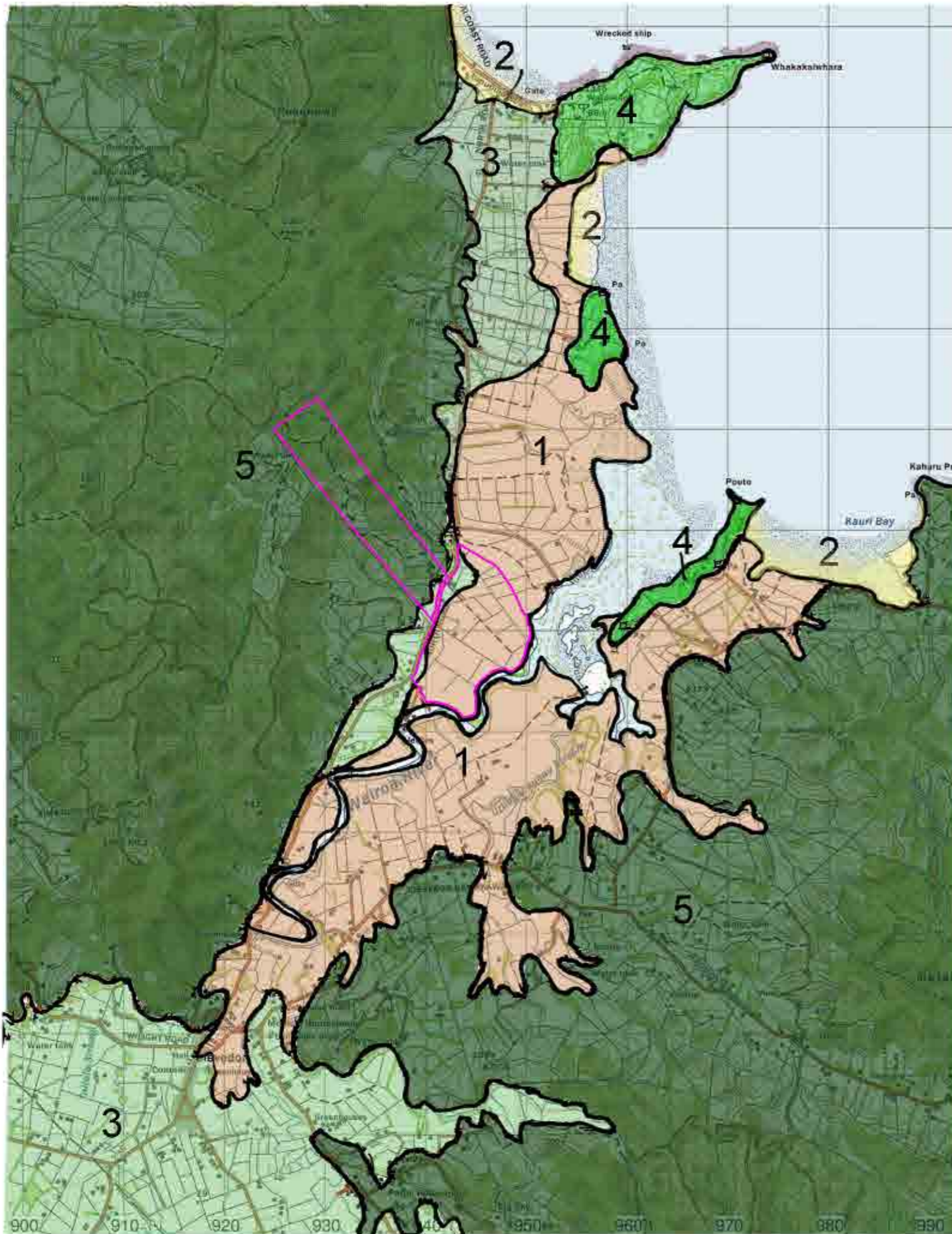


Fig.2

A Field Guide To Auckland, Exploring the Region's Natural and Historic Heritage, Cameron E, Hayward B, Murdoch G, 2008, pg 10-11




Timeline for the Auckland region







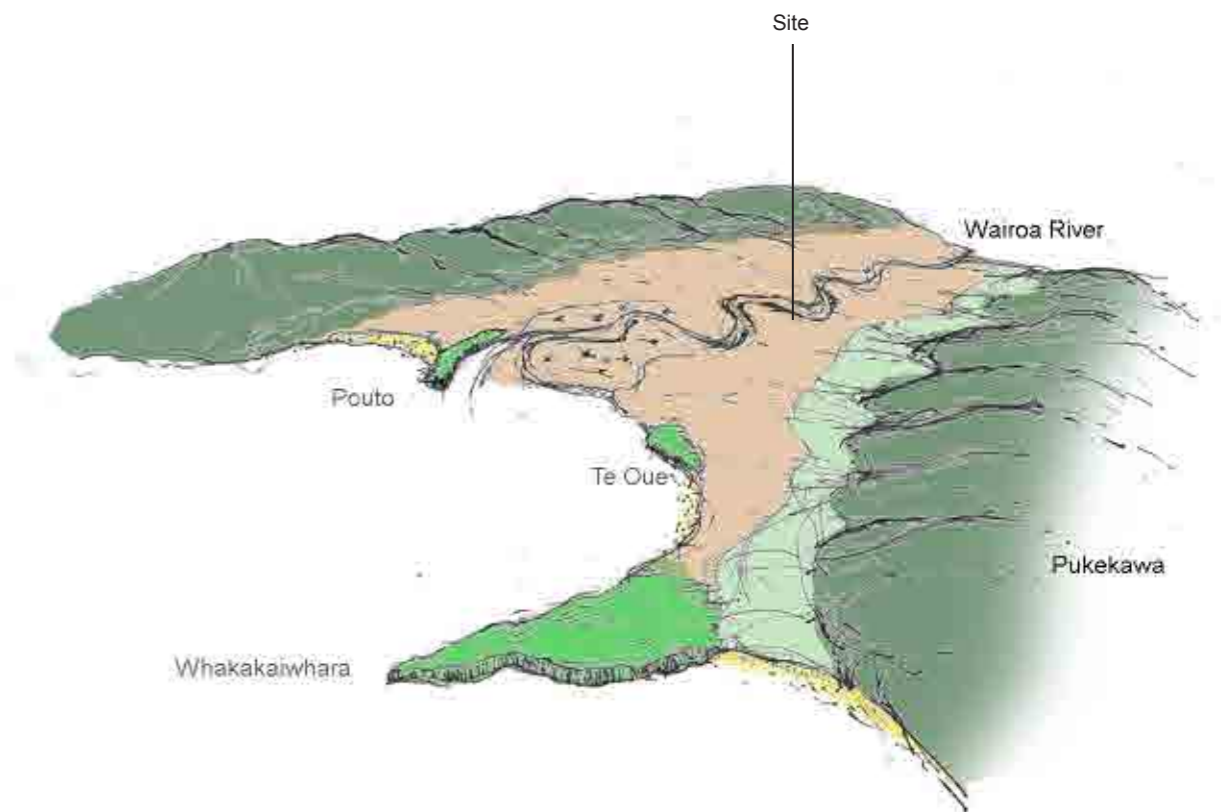
Land Types

Bottom lands

-  1. Flat to very gently sloping estuarine mud flats and low floodplain terraces with Fluid Sulphuric Gley and/or Fluid-Sulphuric Raw soils.
-  2. Beach deposits of loose sand, gravel and shell
-  3. Low terraces of alluvium, estuarine, swamp and fan deposits

Hill country

-  4. Strongly rolling hill country underlain by Greywacke
-  5. Strongly rolling to moderately steep hill country underlain by Greywacke



Pehowai

Te Oue



Owari`

Pehowai

Te Oue



Owari



Pehowai to right

Pehowai

Te Oue



Pukekawa

Owari



Te Pouto



Te Pouto



Te Pouto





Te Ruato



Ruato Urupa





Waiheke

Maraetai (Tamaki Strait)

Waiheke Channel

Rotoroa

Ponui

Sandspit Passage

Whakakaiwhara
(Duder Regional Park)



from Umupuia Beach

Waiheke

Waiheke Channel

Ponui

Whakakaiwhara
(Duder Regional Park)



from Umupuia Beach



Pakihi

Koherurahi

Te Wairoa o Muriwai



Ponui

Sandspit
Passage

Pakihi



Entry to Duder Regional Park

Pehowai Te Oue



Pehowai Te Oue



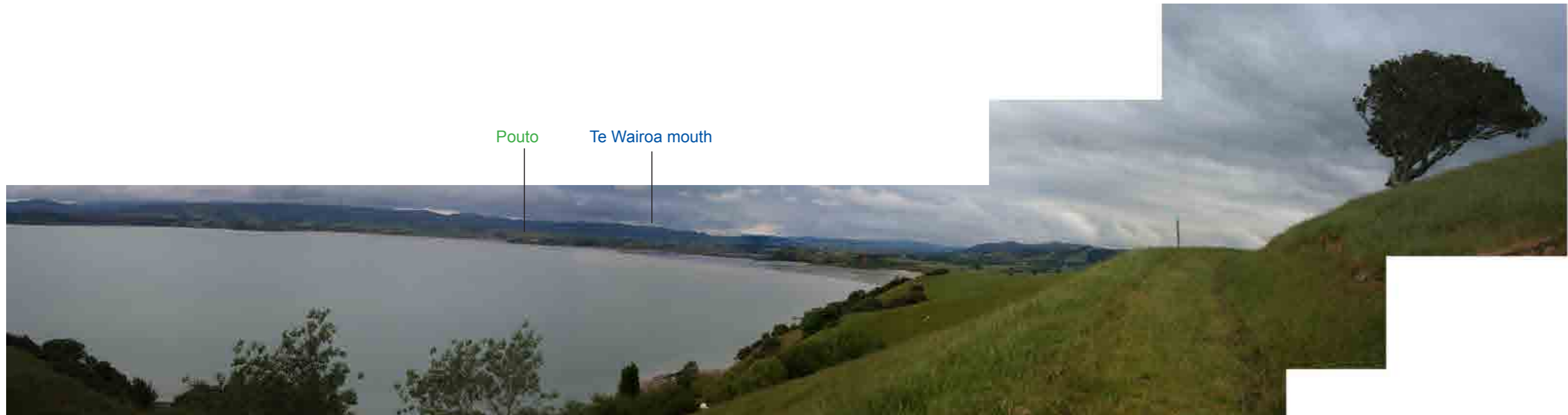
Duder Regional Park



Whakakaiwhara



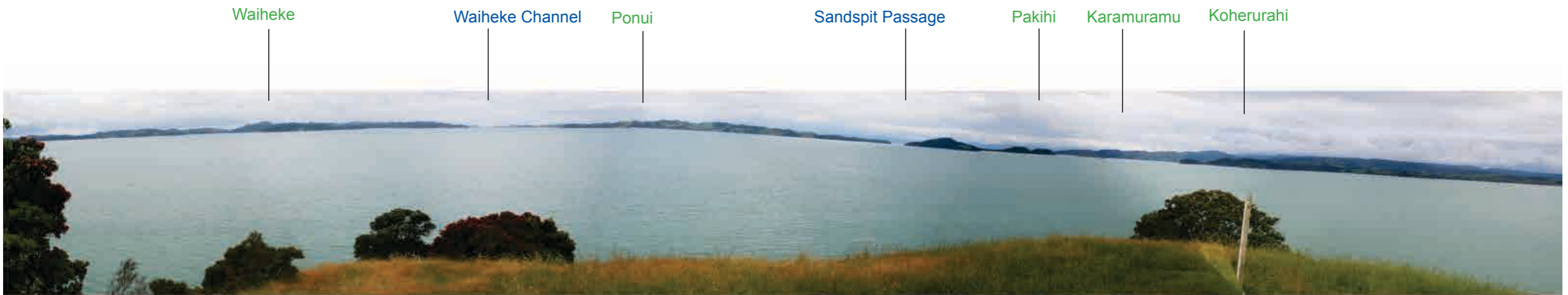
Whakakaiwhara



Whakakaiwhara towards Te Wairoa



View West over Whakakaiwhara





View West on Whakakaiwhara (Duder Regional Park)



Lucas Associates



landscape architects
'Marokapara'
351 Manchester Street
Christchurch
Aotearoa New Zealand

Phone: (03) 365-0789 Fax: (03) 365-0798
theteam@lucas-associates.co.nz
www.lucas-associates.co.nz