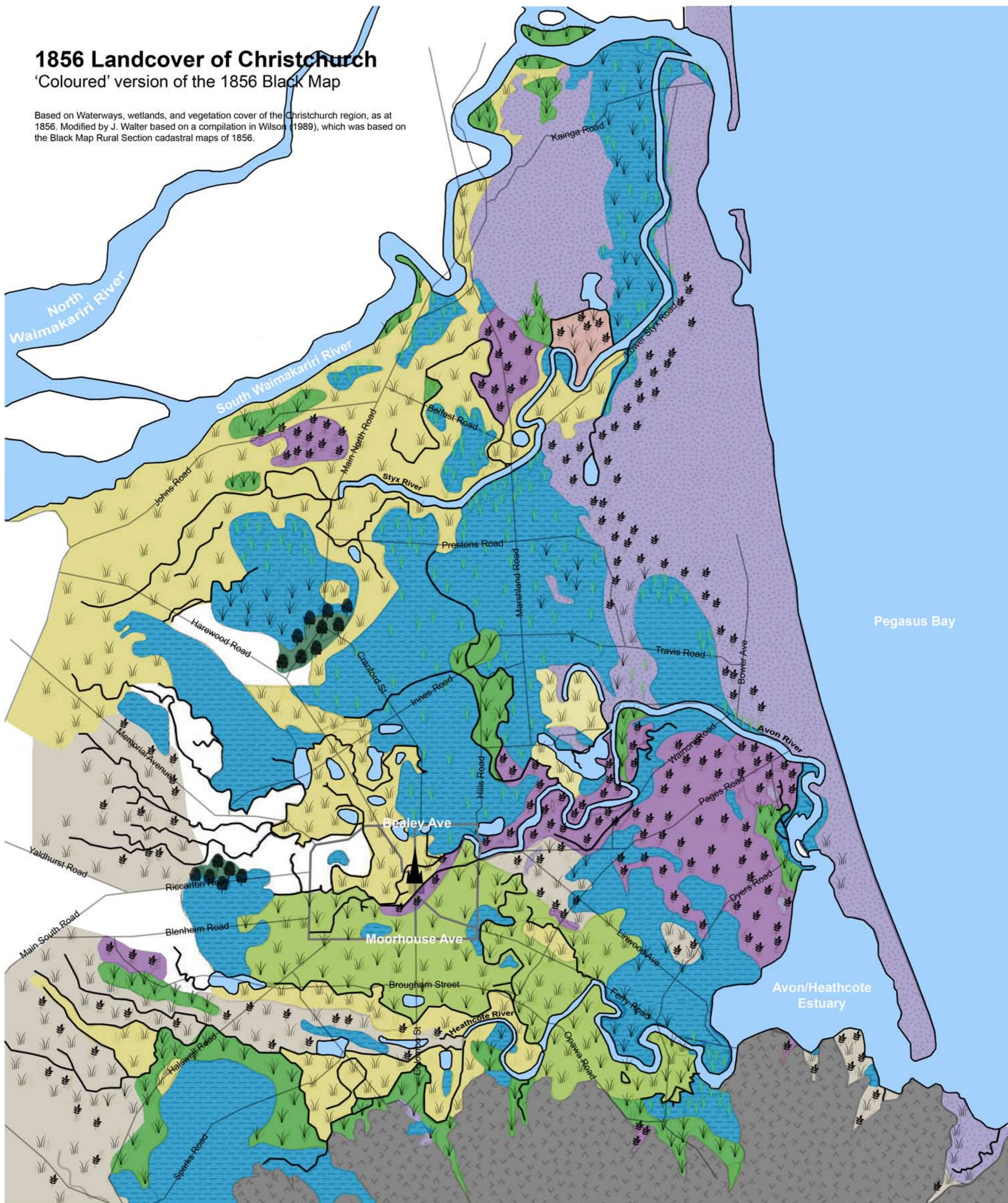


1856 Landcover of Christchurch

'Coloured' version of the 1856 Black Map

Based on Waterways, wetlands, and vegetation cover of the Christchurch region, as at 1856. Modified by J. Walter based on a compilation in Wilson (1989), which was based on the Black Map Rural Section cadastral maps of 1856.



(Source: Waterways, Wetlands, Drainage Guide, Part B 4.4, Christchurch City Council 2003)

- | | | | | | | |
|----------------|-------|-------|------|--------------|--------------|-------|
| Surface Water | Sand | Rock | Fern | Flax & Grass | Grass & Fern | Raupo |
| Streams/Rivers | Swamp | Trees | Flax | Grass | Fern & Flax | |